

TAMUZ
LCD VIDEO MONITORS

MRC

Monitor Remote Control



**To remotely operate and control single or multiple
TAMUZ Broadcast Video Monitors
using TCP/IP Ethernet Network capability**



***It's Time to Change to the
TAMUZ Digital Broadcast Monitors
for your SDTV or HDTV Control Desk or OB-Van***



***High Quality LCD Monitors for multiple applications with Ethernet Remote Control
Hybrid inputs for serial digital and analog video signals
Capable to accept any format or standards
in any common sync technologies
Designed to fulfill the EBU Recommendation for Broadcast Monitors.***

Remote Control for TAMUZ LCD Video Monitors

Designed to replace remotable CRTs in Control Rooms
 User-friendly IP-addressable Ethernet communication
 Available in the **GREY OWL**, **SPARROW HAWK** and **BCM** series
 Single or Multiple remote access
 Individually or simultaneously command capabilities
 Operates up to 255 Monitors in a single Network
 Full control of all features in all monitors
 User setups can be stored and reloaded
 Firmware and LUT down- and up-load
 WINDOWS program with built-in DHCP Server



Customized Monitor Wall
 built with **GREY OWL FLM 115** and **FLM 120**

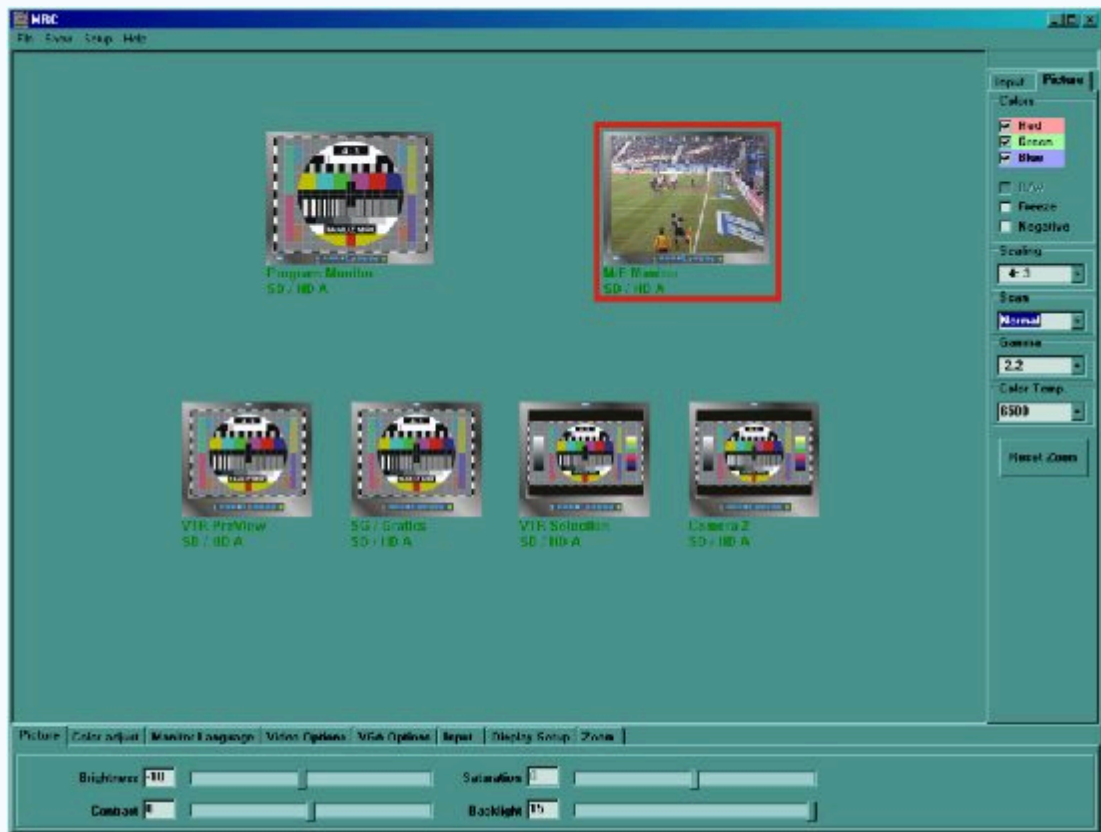
Ethernet 10/100 base/T port
 in the **GREY OWL** series





GUI to remote up to 255 monitors

The MRC software is developed to operate TAMUZ monitors remotely. Up to 255 monitors in one network group are controllable by a click from your PC. The monitor remote network is based on standard Ethernet IT-technology. The built-in DHCP server configures IP addresses automatically. That makes the installation simple and user-friendly.



The MRC GUI above shows a set of four **GREY OWL FLM 115** and two **FLM 120** monitors. The two **FLM 115** on the right are set to 16:9 aspect ratio. All monitors are displaying Input A. The **FLM 120** on the right is selected to receive commands.

The screenshot on the right shows that 16:9 aspect ratio is selected for monitor with ID "ME Monitor". The icon changes to a wide-screen image to visualize the modification.

Selected monitors are indicated by an icon showing a video image, the test pattern image indicates unselected monitors.

Radio buttons and pull-down lists allows access to all features and functions of the monitors. Sliders at the bottom can be used for Brightness, Saturation, Contrast or Backlight adjustments.

The user can arrange and scale the monitor icons on the MRC desktop to create his own layout.





Network Setup and Monitor Configuration



The MRC Software has his own DHCP Server. The master IP address is given by the Host PC, all others are automatically selected. The maximum 255 units can be in one group.

When connected a new monitor to this group, he will become recognized automatically and added to the group.

The PC system may be equipped with multiple Ethernet ports, so multiple groups can be controlled with the PC system.

IP	MAC	Type	Name	Display	Software	Datum
192.168.123.5	00-20-4a-81-9b-a5	FLM1155D	vTR PieView	25a	5.057	29.8.2006
192.168.123.2	00-20-4a-81-ab-5c	FLM1155D	SG / Graphics	25a	5.057	29.8.2006
192.168.123.7	00-20-4a-81-9b-56	FLM1155D	vTR Selection	0	2.050	25.9.2002
192.168.123.3	00-20-4a-81-9b-18	FLM1155D	Camera 2	0	2.050	25.9.2002
192.168.123.1	00-20-4a-8c-ad-71	FLM1205D	Program Monitor	293	5.057	29.8.2006
192.168.123.123	00-20-4a-8c-ad-00	FLM1205D	M/E Monitor	290	5.057	29.8.2006

Using the FACTORY SETTINGS menu, all active monitors are listed with their relevant data and names.



Open the MONITOR INFO menu for one of the active monitors, the individual data and names will be visible. Modifications are not possible within this menu.

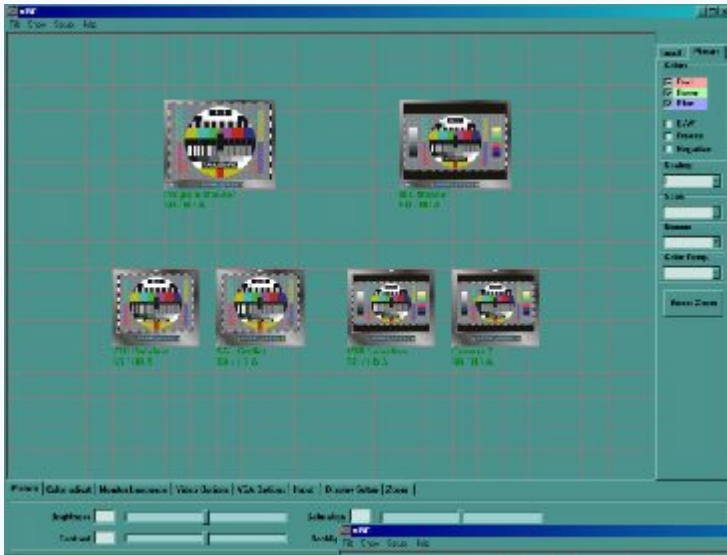


The monitor name and type can be modified with the CONFIGURATION menu. Clicking the button "Write Type Information to Monitor" the data becomes stored by the monitor.



Change the setup for all monitors

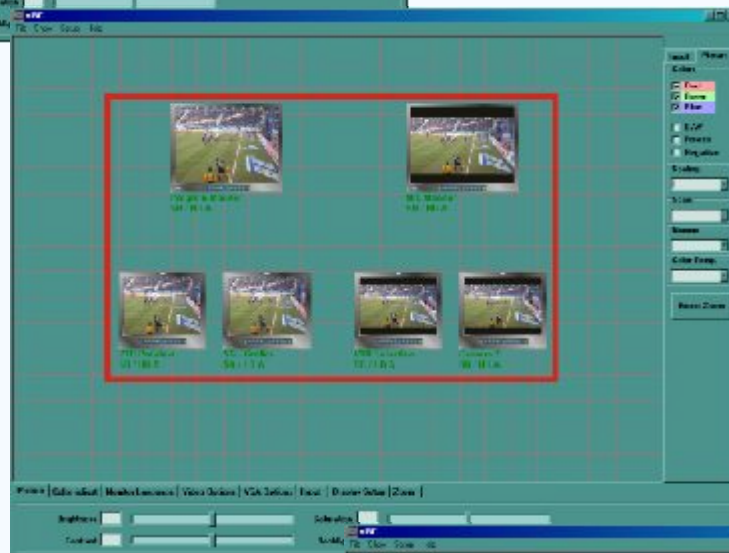
Changing the input or the aspect ratio for a group of monitors without a remote tool is a difficult job, but it can be achieved with the MRC software. The WINDOWS software runs on standard PC's. Drag'n drop and mouse clicking can select a new setup for a group of monitors.



The screenshot on the left shows monitors configuration with 4:3 and 16:9 setup.

The screen shots below shows how easy to switch all monitors to 16:9 aspect ratio by mouse dragging.

Selected monitors are indicated by an icon showing a video image.



Now the new aspect ratio can be selected from the pull-down menu. All monitors will follow the command immediately, regardless of the previous status.





Change the setup for a group of monitors

The MRC software features the capability to change/modify any type of setup for monitors within one group. Draw a rectangle around the monitors and select the new function from the pull-down menu. This is easy and fast to do.

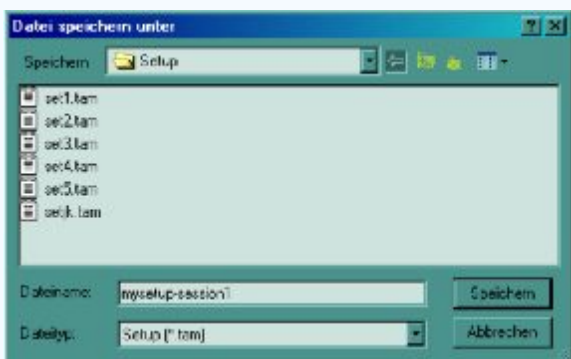


This screenshot on the left shows monitor configuration with 4:3 and 16:9 setup, all set to input A.

To switch the lower row of monitors to a different input, select them by drawing a rectangle around.

Enabled monitors are indicated by an icon showing a video image.

Select the INPUT menu and switch to SD/HD B. When that input has no signal, the text under monitor icons changes to black color.



All individual setups can be stored as a file. This allows to reload setups for monitor walls by a click of the mouse.

Each MRC software licence is protected by a USB dongle.

Where to buy

**TAMUZ
MONITORS**

TAMUZ Monitors GmbH
Headquarter, R&D and Service
European Sales and International Export
Tiedenkamp 16
D-24558 Henstedt-Ulzburg
Germany
tel: +49 - 4193 - 997 80
fax: +49 - 4193 - 997 820
eMail: sales@tamuz.tv

Or your authorised local dealer
(see the world wide dealer list at www.tamuz.tv/dealers)



Handmade In Germany
TAMUZ Monitors GmbH ~ Tiedenkamp 16 ~ D-24558 Henstedt-Ulzburg
tel and fax: +49 - (0)700 - TAMUZLCD [826 895 23]

www.tamuz.de - **www.tamuz.tv** - www.tamuz-usa.com